

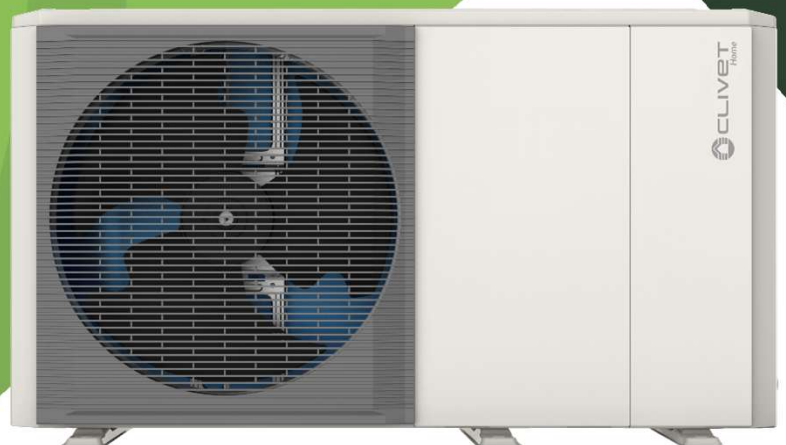


# Ultimate Renewables Supplies

*Supplying your renewable future*

## URS End User Quick Guide

Clivet Edge EVO 2.0 (R32)



## About Ultimate Renewables Supplies

Ultimate Renewables Supplies are a wholesale renewable energy supply and distribution company

Our comprehensive services encompass every aspect of the process, guaranteeing a seamless experience for our valued customers. From training our skilled installers to designing customised systems tailored to your specific requirements, we are committed to providing excellence at every step of the way.

At Ultimate Renewables Supplies, we understand that a successful renewable energy project requires more than just high-quality products. That's why we go the extra mile to provide a holistic approach, ensuring the entire installation process is hassle-free. Rest assured, we source and supply only the finest equipment to optimize your system's performance and efficiency.

With years of experience in the renewable energy sector, we have built a reputation for our unmatched expertise, professionalism, and customer-centric approach. When you choose Ultimate Renewables Supplies, you're not just investing in a product or service – you're investing in a sustainable future.

Join us on this journey towards a greener and more eco-friendly tomorrow.

Experience the difference with Ultimate Renewables Supplies, where innovation meets sustainability, and customer satisfaction is our ultimate goal.

**Please read the following guide and familiarise yourself with your heat pump controls.**

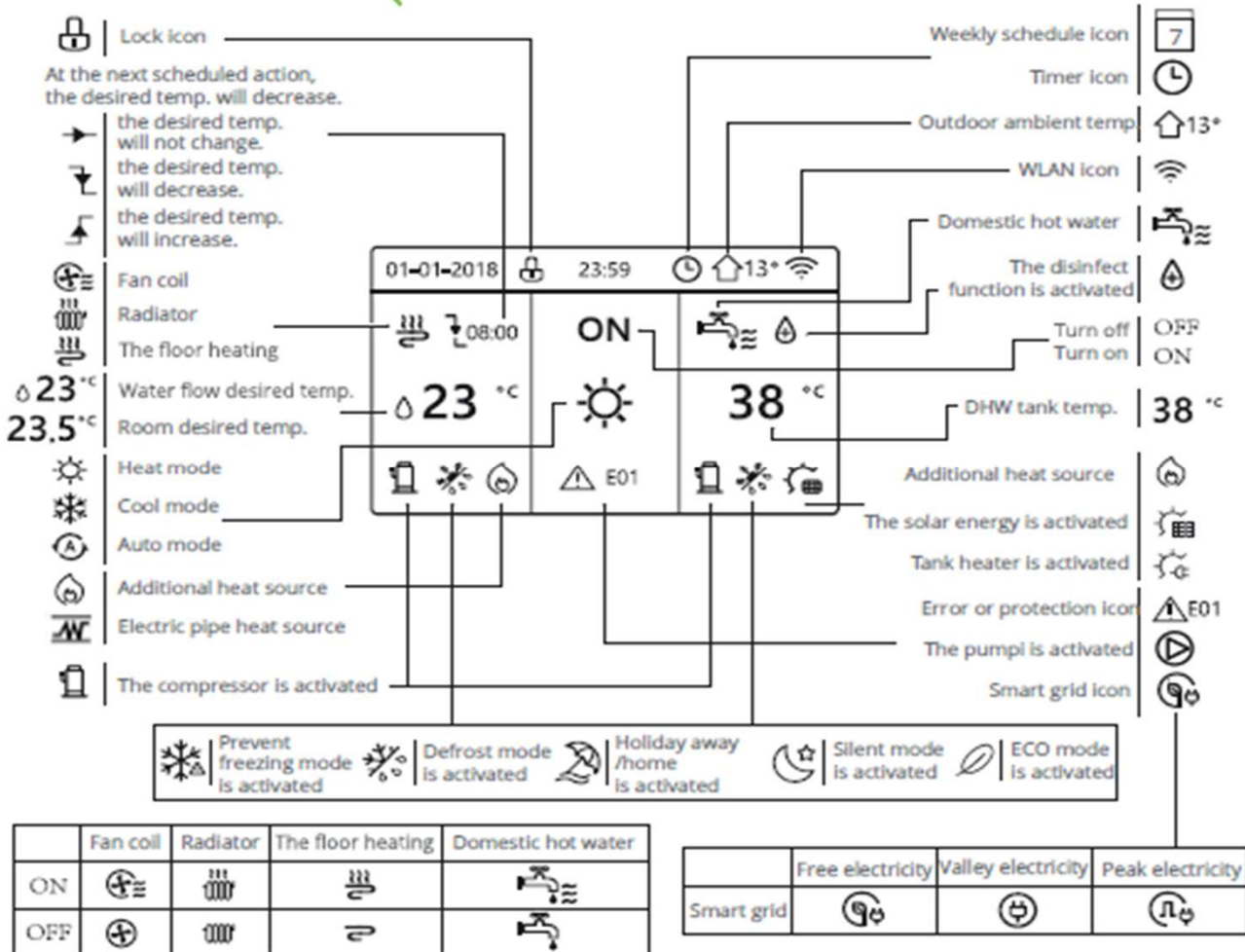
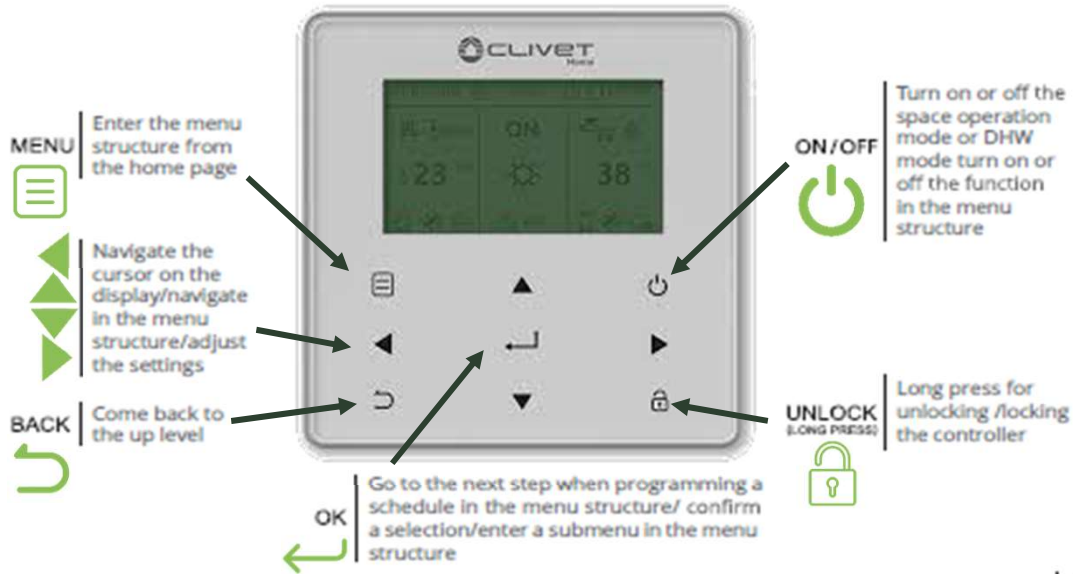
Please note: that to ensure efficient operation of your system and as a condition of the warranty your heat pump will need to be serviced annually.

## What to do if your system stops working

If you are having issues with your system, then you should contact your installer or the company who sold you your system, if you are no longer in contact with them then you can contact us on **01869 929042** or [info@ultimaterenewables.com](mailto:info@ultimaterenewables.com) and we will put you in contact with one of our accredited installers in your area.

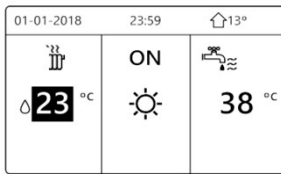


## Controls Diagram

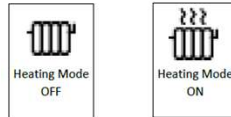


## End User System Operation Guide

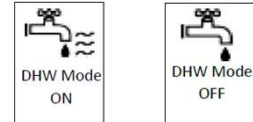
ON and OFF heating and hot water icons.



### Heating



### Hot water



## Unlock Screen

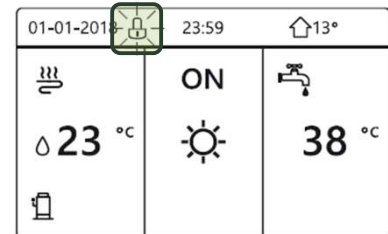
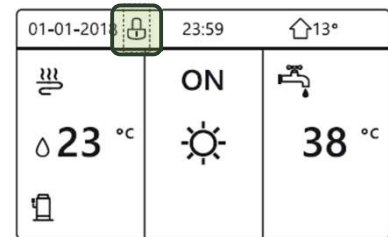
If the icon is on the screen, the Heat Pump controller is locked.

The screen to the right is displayed:

- Press any key, the icon will flash.
- Press the for a 3 seconds to unlock.

The icon will disappear.

The interface can now be controlled.



## Heating Operation

The middle section of the controller indicates what the current state of the unit is i.e. **ON** or **OFF**. In this case heating is shown below the **ON/OFF** indicator which means the unit is being used for heating and not cooling.

### To operate the heating

- Press the button to highlight the heating temperature on the left-hand side of the screen
- Press the button once.
- ON** will now appear above the symbol.

The Heat Pump will start the circulating pump after 2 minutes and the compressor in 6-8 minutes.



## Heating Room Temperature Adjustment

To adjust the desired room temperature,

- Press the button to highlight the heating temperature on the left-hand side of the screen
- Use the and buttons to select the temperature
- Press

## Hot Water Operation

To operate the hot water, press the ► button to highlight the hot water temperature on the right-hand side of the screen and press the ⏻ button once.

ON will now appear.



The Heat Pump will start the circulating pump after 2 minutes and the compressor in 6-8 minutes.

## Hot Water Temperature Adjustment

To adjust the hot water temperature, push the ► button to highlight the hot water temperature on the right-hand side of the screen and use the ▲ and ▼ buttons to select the temperature and the press ←.



## Setting Clock and Date

- Press  for 3 seconds to unlock controller
- Press  for the menu
- Keep pressing ▼ to **SERVICE INFORMATION** press ←
- Press ► to **DISPLAY** press ←
- Go to **TIME** using ▼ and press ←
- Set the time hours using ▲ and ▼ then press ►
- Set the time minutes using ▲ and ▼, press ←
- Go to **DATE** using ▼ and press ←
- Then set the day and month as per the hours and minutes process, press ←
- Press ▼ to **Buzzer** press ⏻ to silence the noise from the controller
- Press ↶ until you get back to the front screen.



## Setting up the Clivet Smart phone App (internet required)

The unit can be controlled and managed through the **Smart-Home App** via a Wi-Fi module built into the HMI, which provides various features.

To activate management via the App from a smartphone or tablet, follow this procedure:

On a smartphone:

The App is available for Android and IOS systems and can be downloaded from the respective App Stores.

Download and install the App on the device that will control the unit.

### NOTE:

For quick access to the App download page, scan this QR code



## Setting up the Clivet App

### Sign up/Log in

Open the App and create a new account on the home page or log in

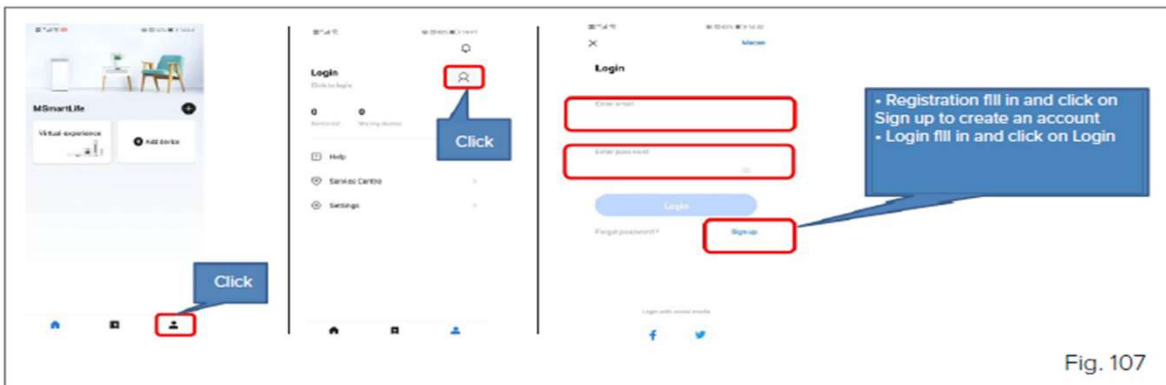


Fig. 107

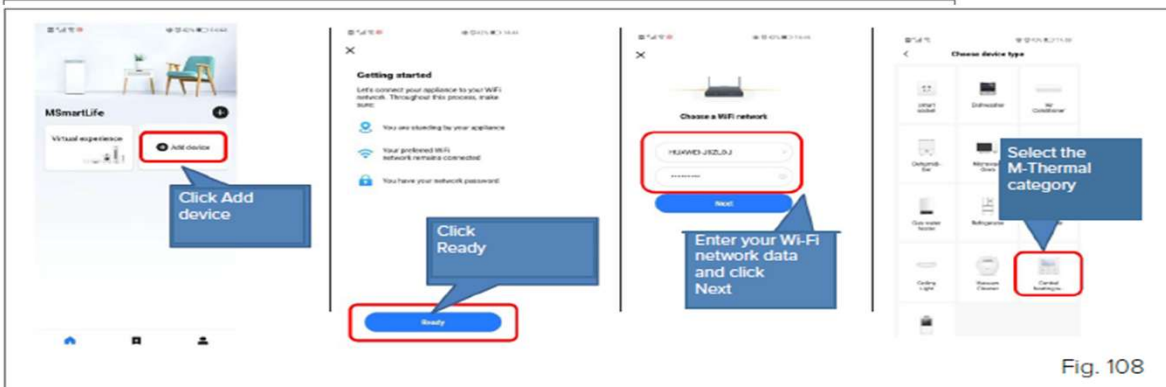
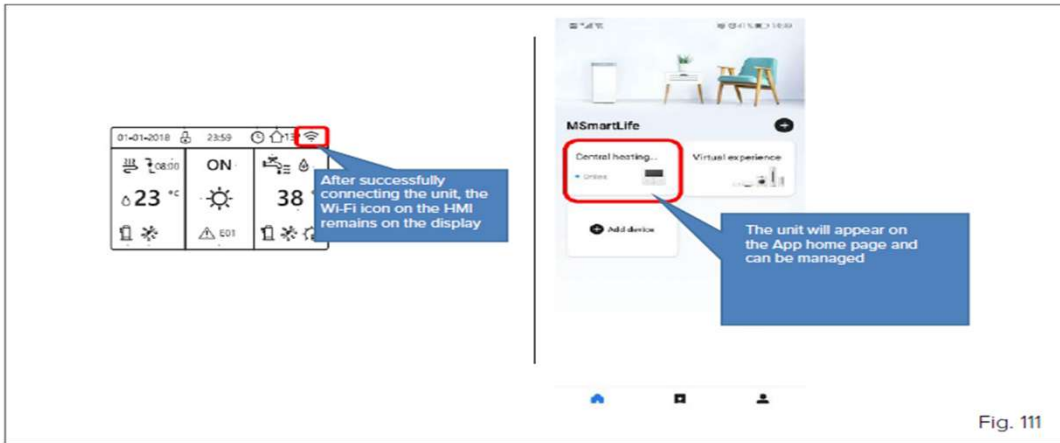
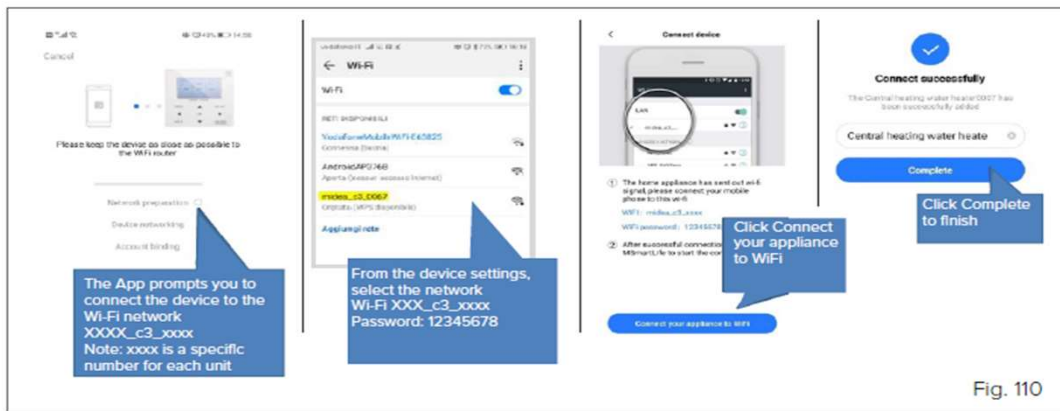
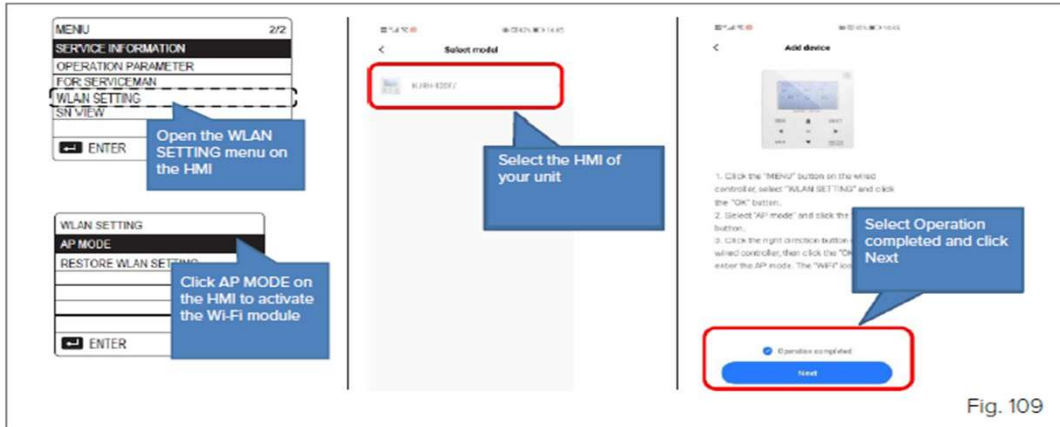


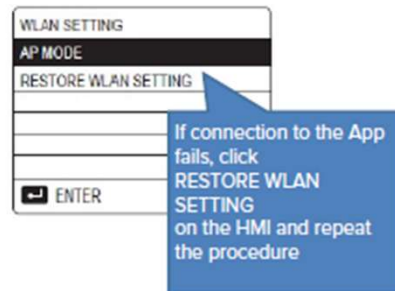
Fig. 108



## Setting up the Clivet App (cont'd)



Note: If the connection fails, reset the settings and repeat the procedure



## Service Log

It is recommended that your heating system is serviced regularly and that the appropriate Service Interval Record is completed.

### Service provider

Before completing the appropriate Service Record below, please ensure you have carried out the service as described in the manufacturer's instructions. Always use the manufacturer's specified spare part replacement controls.

\* A System inhibitor efficacy test is required on every annual service accordance with the manufacturer's instructions and BS7593. It is only acceptable to not have undertaken this if the service engineer's attendance visit was between annual services to attend a non-water facing component.

|  |  |       |     |
|--|--|-------|-----|
| Service No:  |  | Date: |     |
| Engineer name:   |  |       |     |
| Telephone No:  |  |       |     |
| Operative ID No:   |  |       |     |
| System inhibitor concentration has been checked and appropriate action taken, in accordance with BS 7593 & heat pump manufacturers' instructions.* |  | YES   | N/A |
| Comments:  |  |       |     |
| Signature:   |  |       |     |

|  |  |       |     |
|--|--|-------|-----|
| Service No:  |  | Date: |     |
| Engineer name:   |  |       |     |
| Telephone No:  |  |       |     |
| Operative ID No:   |  |       |     |
| System inhibitor concentration has been checked and appropriate action taken, in accordance with BS 7593 & heat pump manufacturers' instructions.* |  | YES   | N/A |
| Comments:  |  |       |     |
| Signature:   |  |       |     |

|  |  |       |     |
|--|--|-------|-----|
| Service No:  |  | Date: |     |
| Engineer name:   |  |       |     |
| Telephone No:  |  |       |     |
| Operative ID No:   |  |       |     |
| System inhibitor concentration has been checked and appropriate action taken, in accordance with BS 7593 & heat pump manufacturers' instructions.* |  | YES   | N/A |
| Comments:  |  |       |     |
| Signature:   |  |       |     |

|  |  |       |     |
|--|--|-------|-----|
| Service No:  |  | Date: |     |
| Engineer name:   |  |       |     |
| Telephone No:  |  |       |     |
| Operative ID No:   |  |       |     |
| System inhibitor concentration has been checked and appropriate action taken, in accordance with BS 7593 & heat pump manufacturers' instructions.* |  | YES   | N/A |
| Comments:  |  |       |     |
| Signature:   |  |       |     |

|  |  |       |     |
|--|--|-------|-----|
| Service No:  |  | Date: |     |
| Engineer name:   |  |       |     |
| Telephone No:  |  |       |     |
| Operative ID No:   |  |       |     |
| System inhibitor concentration has been checked and appropriate action taken, in accordance with BS 7593 & heat pump manufacturers' instructions.* |  | YES   | N/A |
| Comments:  |  |       |     |
| Signature:   |  |       |     |

|  |  |       |     |
|--|--|-------|-----|
| Service No:  |  | Date: |     |
| Engineer name:   |  |       |     |
| Telephone No:  |  |       |     |
| Operative ID No:   |  |       |     |
| System inhibitor concentration has been checked and appropriate action taken, in accordance with BS 7593 & heat pump manufacturers' instructions.* |  | YES   | N/A |
| Comments:  |  |       |     |
| Signature:   |  |       |     |



## Service Log

|  |     |       |  |
|--|-----|-------|--|
| Service No:  |     | Date: |  |
| Engineer name:   |     |       |  |
| Telephone No:  |     |       |  |
| Operative ID No:   |     |       |  |
| System inhibitor concentration has been checked and appropriate action taken, in accordance with BS 7593 & heat pump manufacturers' instructions.* | YES | N/A   |  |
| Comments:  |     |       |  |
|  |     |       |  |
| Signature:   |     |       |  |

|  |     |       |  |
|--|-----|-------|--|
| Service No:  |     | Date: |  |
| Engineer name:   |     |       |  |
| Telephone No:  |     |       |  |
| Operative ID No:   |     |       |  |
| System inhibitor concentration has been checked and appropriate action taken, in accordance with BS 7593 & heat pump manufacturers' instructions.* | YES | N/A   |  |
| Comments:  |     |       |  |
|  |     |       |  |
| Signature:   |     |       |  |

|  |     |       |  |
|--|-----|-------|--|
| Service No:  |     | Date: |  |
| Engineer name:   |     |       |  |
| Telephone No:  |     |       |  |
| Operative ID No:   |     |       |  |
| System inhibitor concentration has been checked and appropriate action taken, in accordance with BS 7593 & heat pump manufacturers' instructions.* | YES | N/A   |  |
| Comments:  |     |       |  |
|  |     |       |  |
| Signature:   |     |       |  |

|  |     |       |  |
|--|-----|-------|--|
| Service No:  |     | Date: |  |
| Engineer name:   |     |       |  |
| Telephone No:  |     |       |  |
| Operative ID No:   |     |       |  |
| System inhibitor concentration has been checked and appropriate action taken, in accordance with BS 7593 & heat pump manufacturers' instructions.* | YES | N/A   |  |
| Comments:  |     |       |  |
|  |     |       |  |
| Signature:   |     |       |  |

|  |     |       |  |
|--|-----|-------|--|
| Service No:  |     | Date: |  |
| Engineer name:   |     |       |  |
| Telephone No:  |     |       |  |
| Operative ID No:   |     |       |  |
| System inhibitor concentration has been checked and appropriate action taken, in accordance with BS 7593 & heat pump manufacturers' instructions.* | YES | N/A   |  |
| Comments:  |     |       |  |
|  |     |       |  |
| Signature:   |     |       |  |

|  |     |       |  |
|--|-----|-------|--|
| Service No:  |     | Date: |  |
| Engineer name:   |     |       |  |
| Telephone No:  |     |       |  |
| Operative ID No:   |     |       |  |
| System inhibitor concentration has been checked and appropriate action taken, in accordance with BS 7593 & heat pump manufacturers' instructions.* | YES | N/A   |  |
| Comments:  |     |       |  |
|  |     |       |  |
| Signature:   |     |       |  |